



Porters End Lane

Kimpton, SG4 8ER

Lovely country house with versatile and spacious accommodation of over 4,000 sq ft set on a plot of 0.7 acres with beautiful countryside views. The property benefits from a garden gym, attached double garage and plenty of parking plus a separate paddock of 2.19 acres to the side of the property. Kimpton is a wonderful rural location, within easy reach of Harpenden, Wheathampstead and the surrounding villages.

Guide price £2,250,000

Porters End Lane

Kimpton, SG4 8ER



- Country property of over 4,000 sq ft
- Set on a plot of 0.7 acres
- Spacious and versatile reception rooms
- Surrounded by stunning views
- Garden Gym
- Double Garage
- Plenty of parking
- Separate paddock of 2.19 acres
- Rural location with easy access to Harpenden
- Council Tax Band H

Entrance Hall

Cloakroom

Living Room

23'5" x 13'9" (7.16m x 4.21m)

Kitchen/Dining/Family Room

31'10" x 15'9" (9.72m x 4.82m)

Sitting Room

22'9" x 14'7" (6.94m x 4.47m)

Boot Room

9'2" x 5'11" (2.80m x 1.81m)

Pantry

9'2" x 8'2" (2.80m x 2.51m)

WC

Store

14'10" x 4'7" (4.53m x 1.40m)

Utility/Craft Room

16'6" x 14'7" (5.05m x 4.45m)

Bedroom One

21'1" x 13'9" (6.44m x 4.21m)

Dressing Room

En-suite Shower

Bedroom Two

18'5" x 15'1" (5.62m x 4.62m)

En-suite Shower

Bedroom Three

14'1" x 13'5" (4.30m x 4.09m)

En-suite Bathroom

Bedroom Four

15'1" x 13'11" (4.62m x 4.26m)

Bedroom Five

12'3" x 10'9" (3.74m x 3.28m)

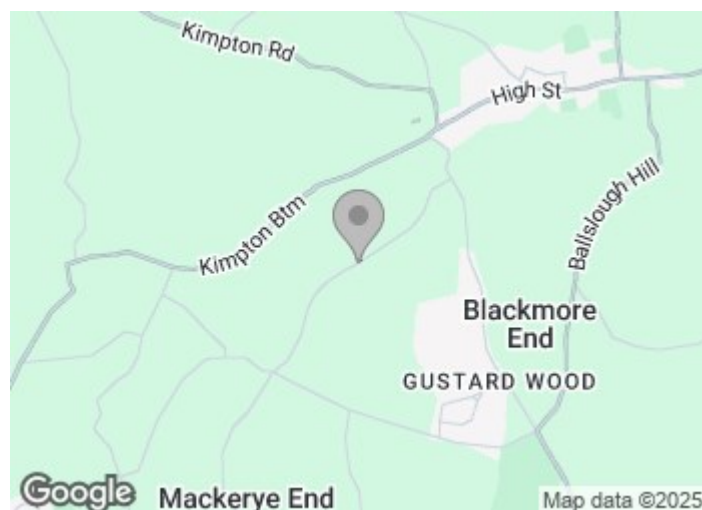
Bathroom

Gym

17'0" x 10'9" (5.19m x 3.29m)

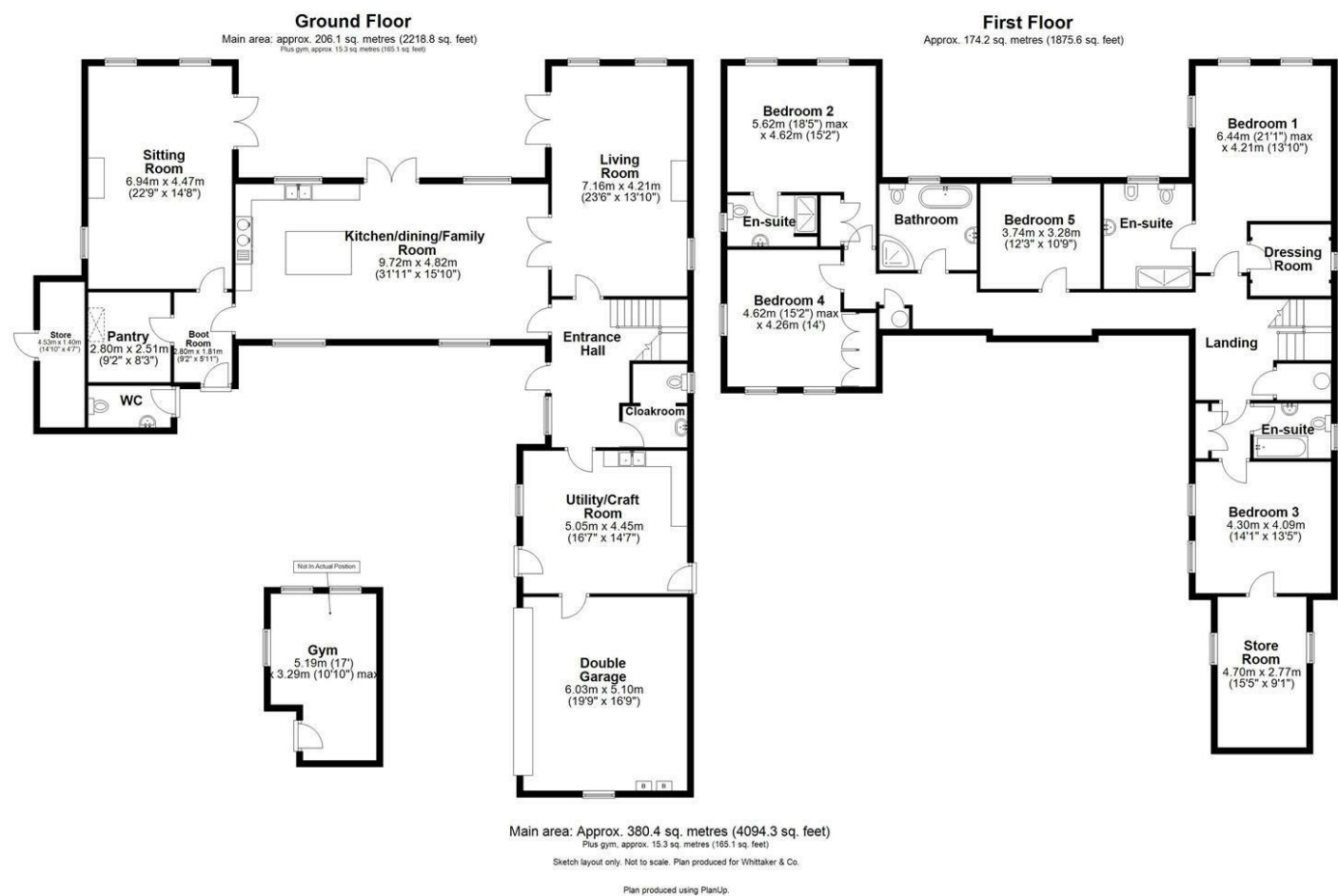
Double Garage

19'9" x 16'8" (6.03m x 5.10m)





Floor Plan



These particulars, whilst believed to be accurate are set out as a general outline only for guidance and do not constitute any part of an offer or contract. Intending purchasers should not rely on them as statements of representation of fact, but must satisfy themselves by inspection or otherwise as to their accuracy. No person in this firms employment has the authority to make or give any representation or warranty in respect of the property.

